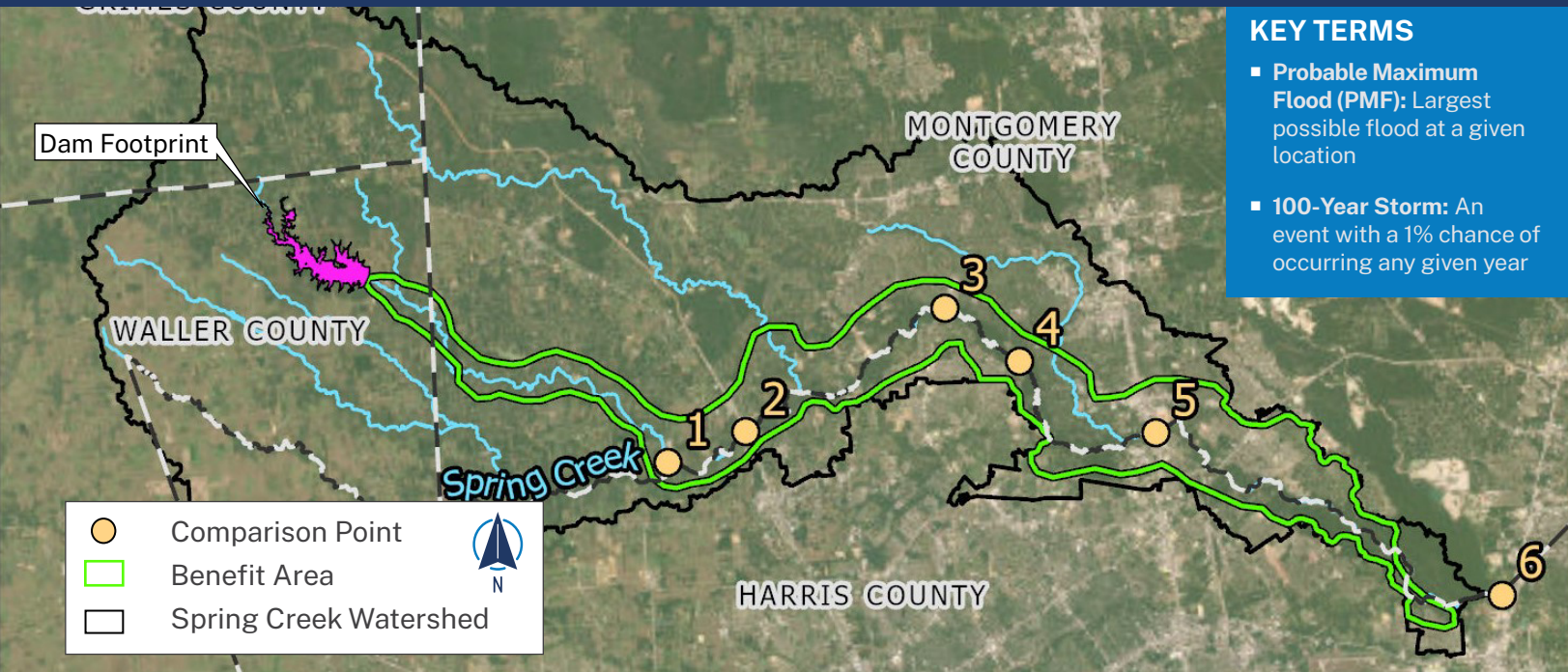


Walnut Creek Detention

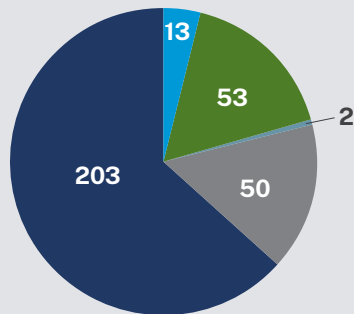
<https://springcreekstudy.com/>

A proposed dry bottom dam facility located on Walnut Creek

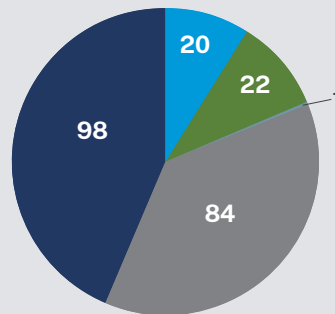


ESTIMATED BENEFITS

Structures Anticipated to No Longer Flood
Hurricane Harvey



Structures Anticipated to No Longer Flood
100-Year Storm



- Waller County Precinct 2
- Harris County Precinct 3
- Harris County Precinct 4
- Montgomery County Precinct 2
- Montgomery County Precinct 3

ADDITIONAL BENEFITS

- Reduced flooding for 9,032 structures in 500-Year event
- Removed 484 structures from flooding in 500-Year

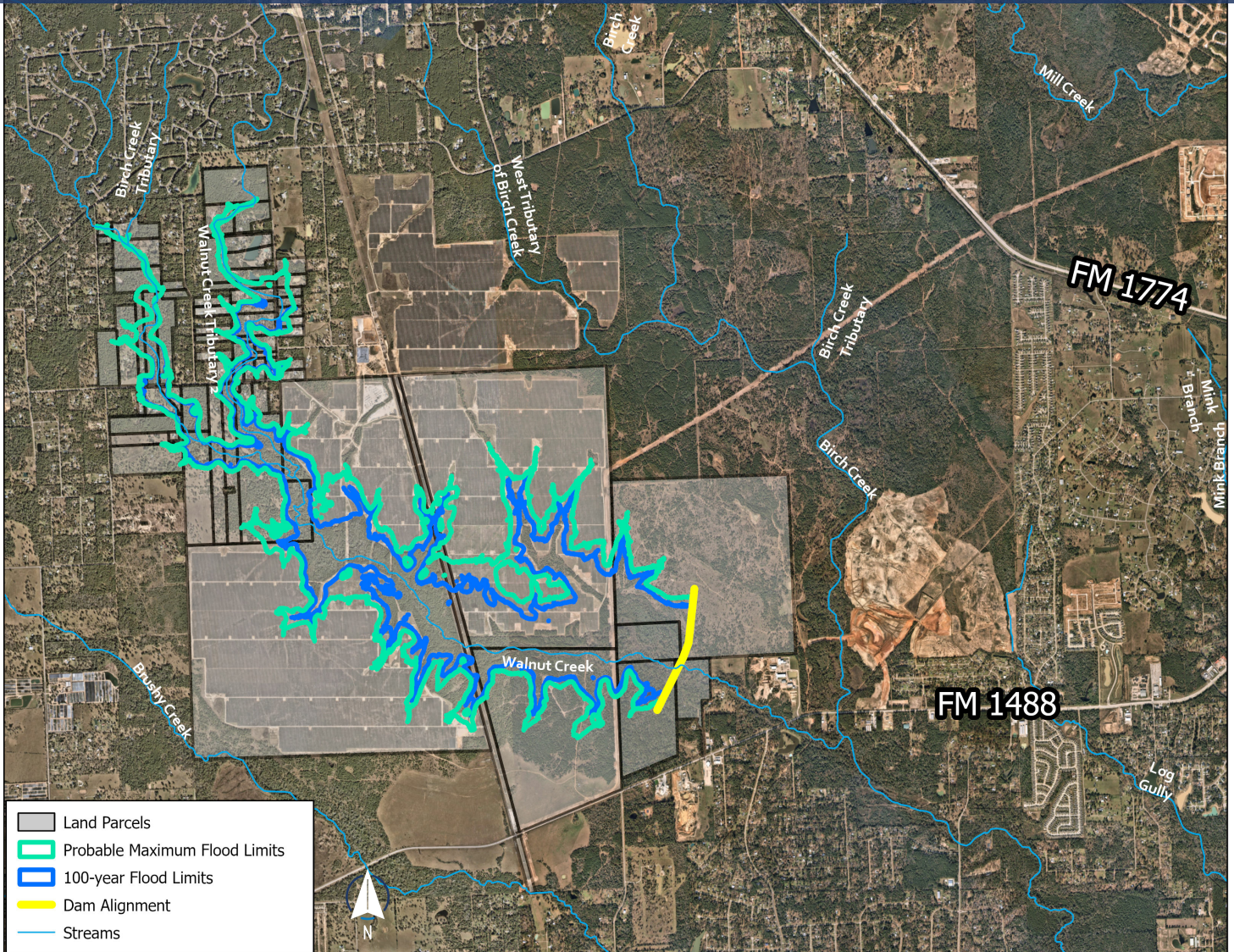
ESTIMATED COSTS

Design Cost.....	\$12M
Environmental Cost	\$5M
Construction Cost	\$83M
Land Cost	\$93M
TOTAL COSTS	\$193M
TOTAL BENEFITS	\$202M

PROJECT BENEFIT-COST RATIO: 1.05

Reduction in Flood Elevations After Project Construction

Comparison Point	Location	100-YR (ft)
1	On Walnut Creek	-2.80
2	SH 249	-0.77
3	Kuykendahl	-0.54
4	Gosling	-0.50
5	I-45	-0.38
6	West Fork Confluences	-0.22



PROJECT DETAILS

- Type: Dry dam detention facility
- Volume provided: 7,300 acre-feet
- Maximum height: 39.1 feet
- Dam Length: 3,373 feet
- Maximum inundation area: 1,370 acre
- 100-year inundation area: 940 acre
- Spillway Elevation: 254.7 feet
- Top of Dam Elevation: 263.6 feet

CHALLENGES

- Current solar farm overlaps portions of the proposed facility
- USACE coordination required due to minor environmental stream and wetland impacts
- Private land owners within project footprint

POTENTIAL PARTNERS

- | | | |
|------------------|---------|---------------------------------|
| ■ Montgomery Co. | ■ HCFCD | ■ USACE |
| ■ MUDs | ■ TWDB | ■ Future Flood Control District |
| ■ SJRA | ■ GLO | ■ Waller County |
| ■ The Woodlands | ■ FEMA | |

NEXT STEPS

- Coordinate with the solar farm for potential shared project
- Identify potential dam owner and operator
- Identify funding partners
- Seek funding for land acquisition, design and construction
- Acquire land using local and other funding sources
- Final engineering and design of proposed facility
- Construction and operation of dam facility