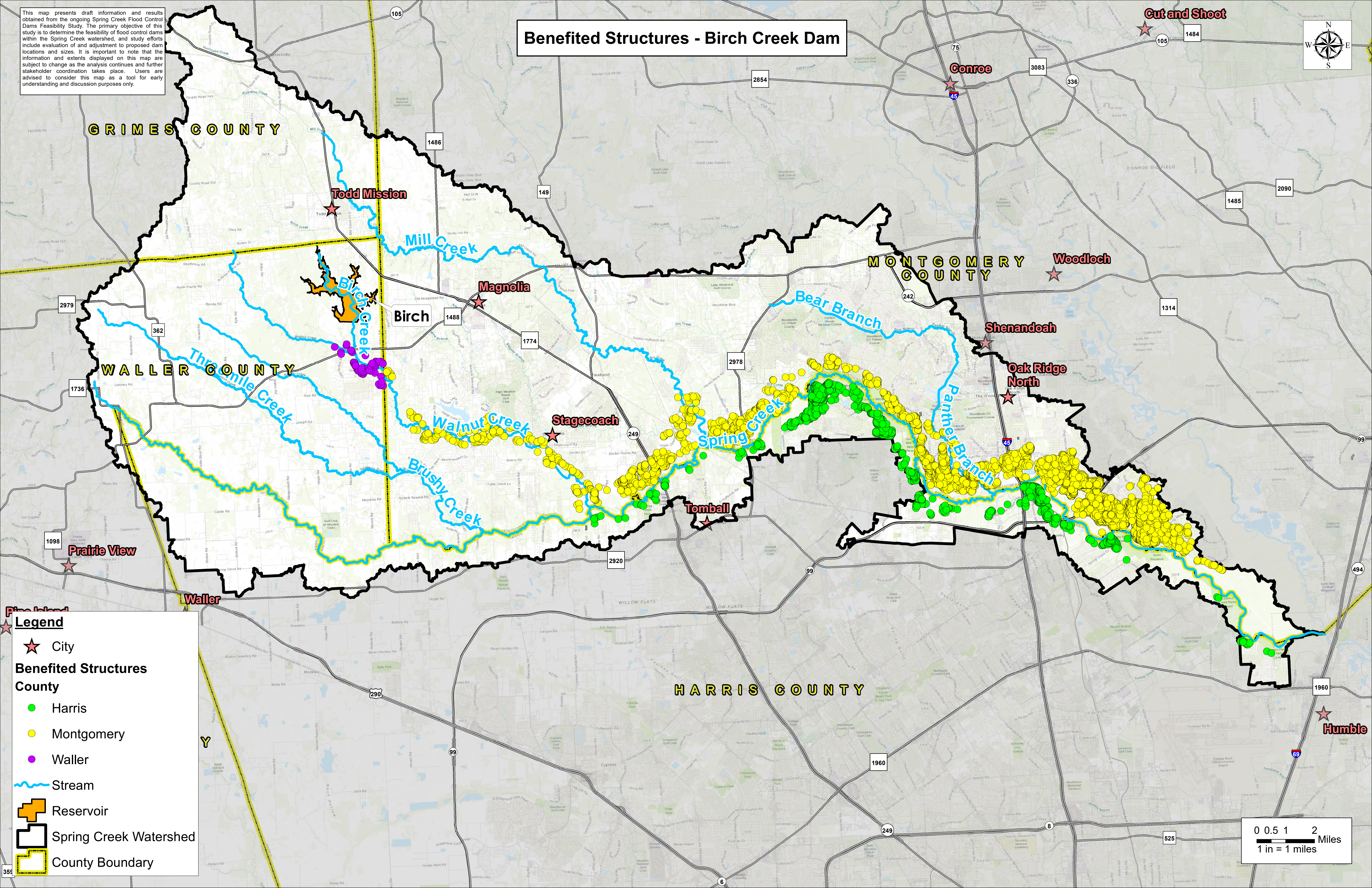
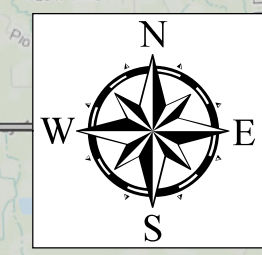


This map presents draft information and results obtained from the ongoing Spring Creek Flood Control Dams Feasibility Study. The primary objective of this study is to determine the feasibility of flood control dams within the Spring Creek watershed, and study efforts include evaluation of and adjustment to proposed dam locations and sizes. It is important to note that the information and extents displayed on this map are subject to change as the analysis continues and further stakeholder coordination takes place. Users are advised to consider this map as a tool for early understanding and discussion purposes only.

# Benefited Structures - Birch Creek Dam

Cut and Shoot



**Legend**

- ★ City
- Benefited Structures**
- County
- Harris
- Montgomery
- Waller
- ~ Stream
- Reservoir
- ▭ Spring Creek Watershed
- ▭ County Boundary

0 0.5 1 2 Miles  
1 in = 1 miles